



Wisdom

READY BUILT



\$ 880,000-\$900,000*

UNDER CONSTRUCTION
FIXED PRICE* PACKAGE

READY TO MOVE IN APPROX. JUNE 2024

RAVENSFIELD

LOT 269, LOCHDON DRIVE

FARLEY

LOT SIZE 647m²

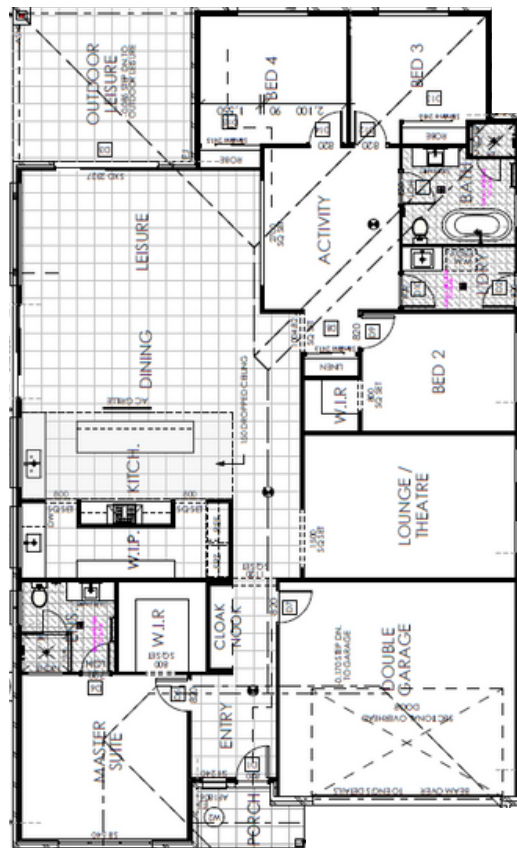
5% DEPOSIT

SINGLE CONTRACT

NO MORE TO PAY UNTIL
COMPLETION

INSPIRE INCLUSIONS

Enquire for full list of inclusions



GROUND FLOOR

22m



Lot Width

30



House Size

4



Bed

2



Bath

2



Garage



Contact
0431 430 588

H&Sales@wisdomhomes.com.au

*Pricing is current at the time of publication however Wisdom Properties Group Pty Ltd (WPG) reserve the right to change pricing, inclusions and colours until the property is SOLD. Please ask your WPG representative for House Plans, Details and Inclusions which are contained within the contract of sale for the property. All properties remain on the market until contracts are exchanged between the purchaser and WPG. Please ask your WPG representative for full details on the WPG process on Home Ownership with Wisdom "Ready Built" Home. E&OE. All drawings and photography are for illustrative purposes and to be used as a guide only and may show decorative finishes that are additional cost items or upgrades.