



**Wisdom**  
READY BUILT



**\$ 1,149,900\***  
UNDER CONSTRUCTION  
FIXED PRICE\* PACKAGE

CATHERINE PARK

LOT 901 SOMERVAILLE DRIVE

CATHERINE FIELD

LOT SIZE 300m<sup>2</sup>

5% DEPOSIT

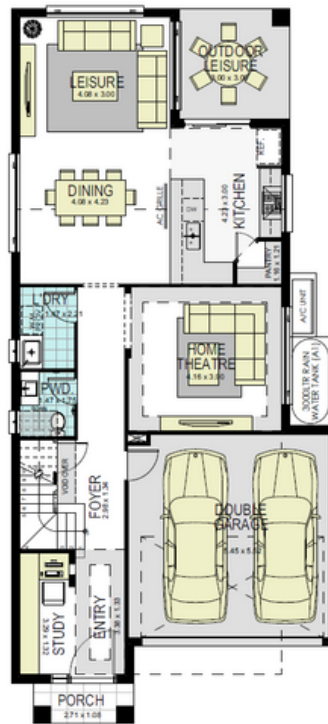
SINGLE CONTRACT

NO MORE TO PAY UNTIL  
COMPLETION

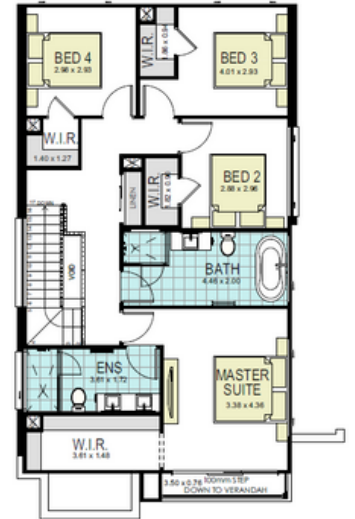
### INSPIRE INCLUSIONS

- 20mm Caesarstone Benchtops throughout
  - Stainless Steel Kitchen Appliances
  - Ducted Air Conditioning
  - Quality Floor Coverings
  - Security Alarm
  - Downlights to Living Areas
  - NBN Ready
  - Landscape & Driveway
  - 25-Year Structural Guarantee
- And much more

Enquire for full list of inclusions



GROUND FLOOR



FIRST FLOOR

HOME SIZE 26

4

2

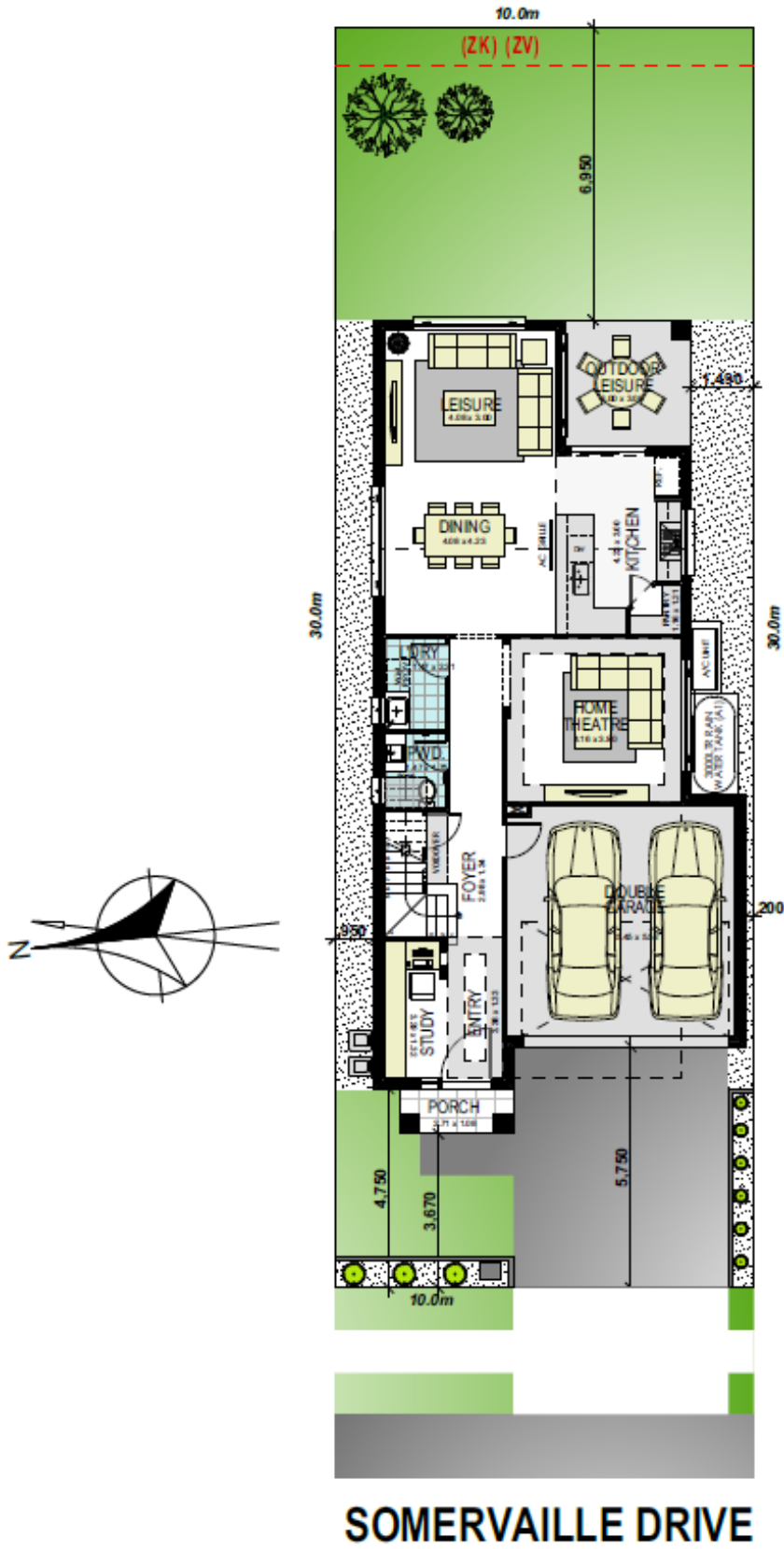
2



Contact  
0431 430 588  
H&Sales@wisdomhomes.com.au

\*Pricing is current at the time of publication however Wisdom Properties Group Pty Ltd (WPG) reserve the right to change pricing, inclusions and colours until the property is SOLD. Please ask your WPG representative for House Plans, Details and Inclusions which are contained within the contract of sale for the property. All properties remain on the market until contracts are exchanged between the purchaser and WPG. Please ask your WPG representative for full details on the WPG process on Home Ownership with Wisdom "Ready Built" Home. E&OE. All drawings and photography are for illustrative purposes and to be used as a guide only and may show decorative finishes that are additional cost items or upgrades.

**LOT 901**



**SOMERVILLE DRIVE**



Finance  
Calculator