



**\$ 1,068,355**

FLEXIBLE PACKAGE\*

**FIGTREE HILL**

**Lot 1180 Proposed Rd, Gilead**

Lot Size 400m2

Approx Land Rego Mid Nov 2024

House Price \$448,355

Current Promotion



**Inclusions**

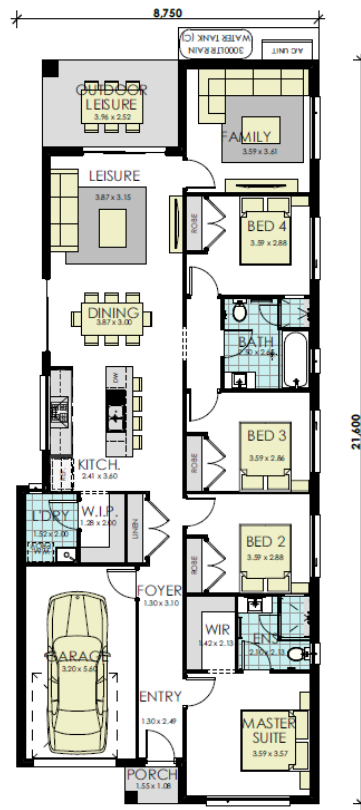
- 20mm Caesarstone benchtops
- Stainless steel appliances
- Floor coverings
- 25-year Structural Guarantee
- Provisional allowance for Driveway + Letter box

And much more....

Enquire for full list of inclusions

**momentum**

**PARIS 19 | CHALET**



Flexible package means you can change the house type & make upgrades or changes to suit your lifestyle\*

12.5 m



19sqsq



4



2



1



**Contact us**

www.wisdomhomes.com.au  
1300 855 775

HomeWorld Marsden Park  
2-4 Donald Street,  
Marsden Park NSW, 2765  
02 4605 0662

HomeWorld Leppington  
29-31 Cato Circuit,  
Leppington NSW 2179  
02 8066 0440

HomeWorld Box Hill  
24-34 Noah Street  
Box Hill, NSW, 2765  
02 4606 2416

Wongawilli  
11 Whistler Street,  
Wongawilli, NSW, 2530  
02 4606 2419

Cobbitty  
2-4 Kakadu Street,  
COBBITTY NSW 2570  
02 4606 2415

\*Terms & Conditions

\* The price is indicative only and is subject to change following confirmation of site conditions, inclusions, external costs and reports. A fixed price package may be created upon request and that fixed price may not match the advertised price. Changes or upgrades requested by the customer including but not limited to, floor plan changes and upgrades may change the price. Wisdom Homes reserves the right to change specifications, materials, products, and suppliers without notice. Images are to be used as a guide only and may show décor items and external finishes not included in the price. Please ask your Wisdom Homes representative for House Plans and Inclusions details. Pricing as of 1 February, 2024, but subject to change without notice. Plans are subject to Approval by the Local Authorities and Principal Developer. Price is fixed only once both Contract for Sale of Land and Building Contracts are exchanged. E&OE. Wisdom Properties Group Pty Ltd trading as Wisdom Homes (ABN 82 089 425 829) Building Licence: 1319151.