



WISDOM
READY BUILT

\$ 915,000*

Ready to move in

AVERYS RISE

LOT 532 SEBONACK ST

HEDDON GRETA

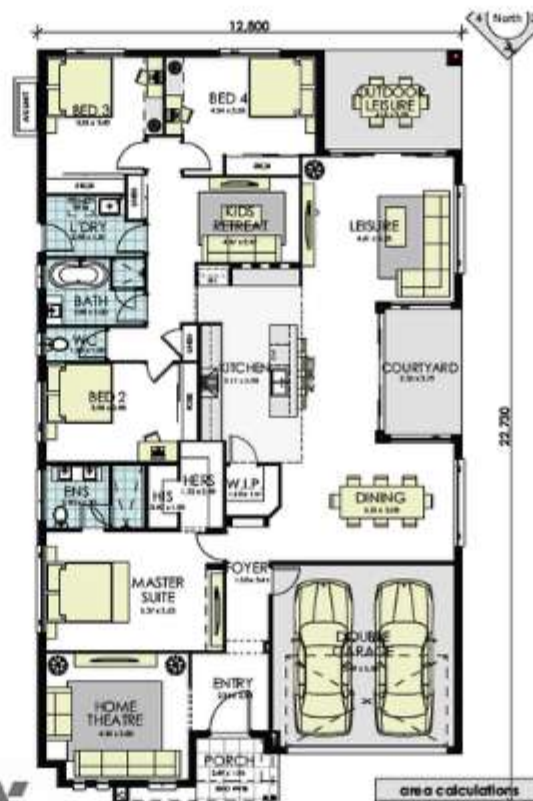
LOT SIZE 595m²

Single Contract

5% Deposit, no more to pay until
Completion

INCLUSIONS

- 20mm Caesarstone Benchtops
- 20mm Caesarstone waterfall ends
- 150mm dropped ceilings over kitchen
- Cold water pointy for fridge
- 600mm wall oven & gas cooktop
- Dishwasher
- Designer floating bathroom vanities
- Freestanding bath
- Square set corners in living areas
- Landscaping, fences, driveway & letterbox
- Turnkey package



GROUND FLOOR

area calculations	
LOWER FLOOR	221.76
PORCH	4.63
OUTDOOR LEISURE	12.54
COURTYARD	8.91
GARAGE	25.93
gross floor area	283.77

17m2



30sqs



4



2



2



0431 430 588

H&Isales@wisdomhomes.com.au

*Pricing is current at the time of publication however Wisdom Properties Group Pty Ltd (WPG) reserve the right to change pricing, inclusions and colours until the property is SOLD. Please ask your WPG representative for House Plans, Details and Inclusions which are contained within the contract of sale for the property. All properties remain on the market until contracts are exchanged between the purchaser and WPG. Please ask your WPG representative for full details on the WPG process on Home Ownership with Wisdom "Ready Built" Home. E&OE. All drawings and photography are for illustrative purposes and to be used as a guide only and may show decorative finishes that are additional cost items or upgrades.