



**\$ 801,190\***

FLEXIBLE PACKAGE\*

**AUSTIN | TRADITIONAL**

**RAVENSFIELD**

LOT 310, MELTON CLOSE

FARLEY

LOT SIZE 527m<sup>2</sup>

LAND REGO. APPROX. OCT 2024

**5% DEPOSIT**

**SPLIT CONTRACT**

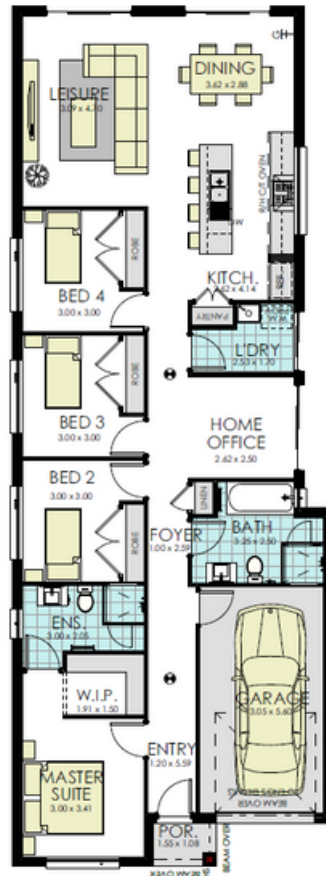
Save on Stamp Duty

**momentum**

- Contemporary Kitchen Design
  - Quality Floor Coverings
  - Semi Framed Shower Screens
  - Floating Vanities to Bathrooms
  - 2.440mm Ceiling Heights
  - 25-year Structural Guarantee
  - Provisional allowance for Driveway + Letterbox
- And much more

Enquire for full list of inclusions

Flexible package means you can change the house type & make upgrades or changes to suit your lifestyle\*



HOUSE PRICE \$316,190



17m



17



4



Bed

2



Bath

1



Garage



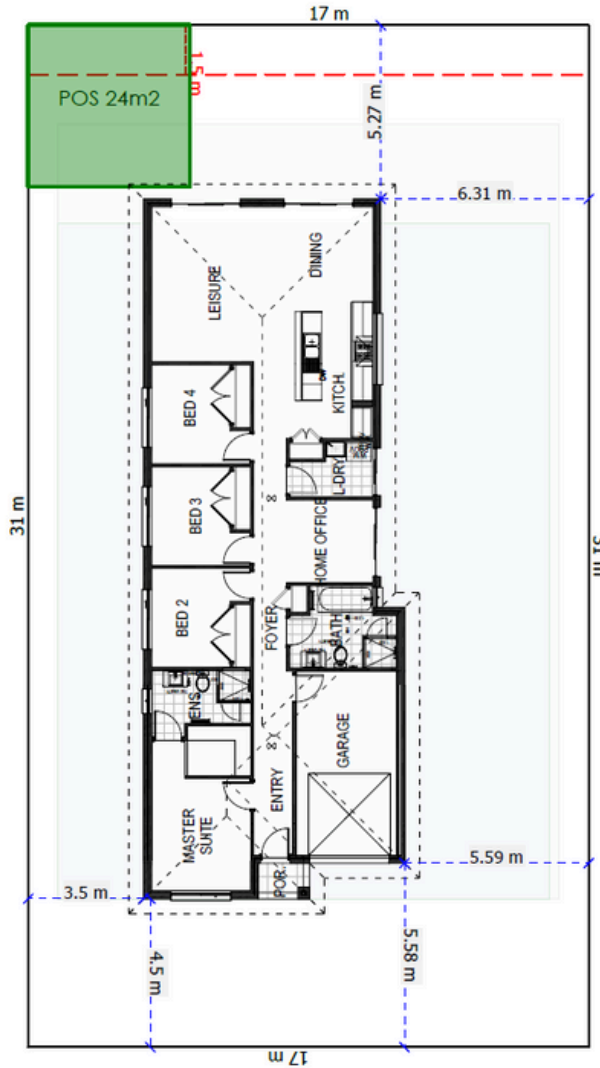
Contact  
0431 430 588

H&Sales@wisdomhomes.com.au

\*Terms & Conditions

\* The price is indicative only and is subject to change following confirmation of site conditions, inclusions, external costs and reports. A fixed price package may be created upon request and that fixed price may not match the advertised price. Changes or upgrades requested by the customer including but not limited to, floor plan changes and upgrades may change the price. Wisdom Homes reserves the right to change specifications, materials, products, and suppliers without notice. Images are to be used as a guide only and may show décor items and external finishes not included in the price. Please ask your Wisdom Homes representative for House Plans and Inclusions details. Pricing as of 1 June, 2024, but subject to change without notice. Plans are subject to Approval by the Local Authorities and Principal Developer. Price is fixed only once both Contract for Sale of Land and Building Contracts are exchanged. E&OE. Wisdom Properties Group Pty Ltd trading as Wisdom Homes (ABN 82 089 425 829) Building Licence: 131951C.

LOT NUMBER | 310



We offer a single contract solution, ask about adding a Pool



Finance Calculator